
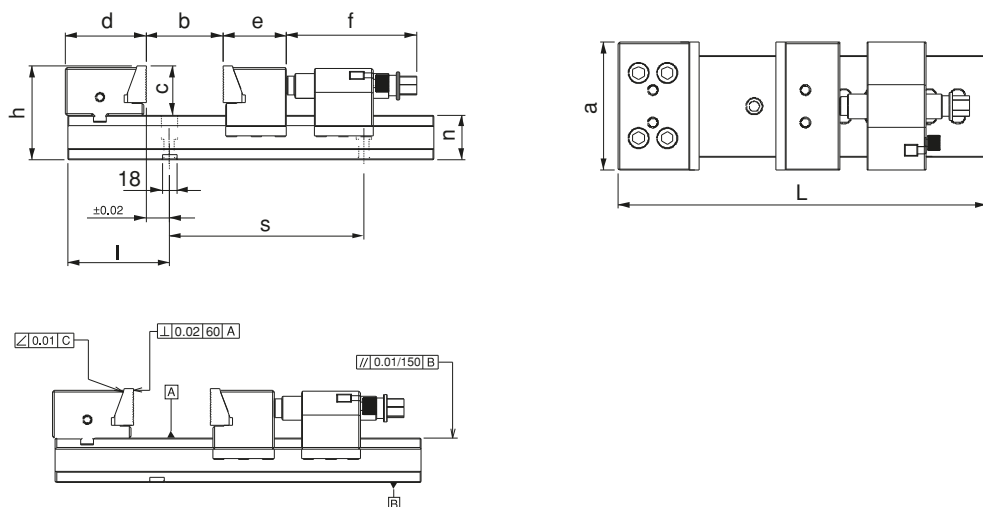


Referans Nr.	a	b	c	L	d	e	f	h	i	n	s	clamping force kgf	 (kg)
2330-127160	127	0-160	60	422	99	78	160	115	125	55	200	3500	28
2330-157200	157	0-200	60	462	99	78	160	115	150	55	200	4500	46
2330-157300	157	0-300	60	562	99	78	160	115	150	55	250	4500	51
2330-197300	197	0-300	60	562	99	78	160	115	150	55	250	4500	66
2330-197400	197	0-400	60	662	99	78	160	115	150	55	350	4500	73
2330-197500	197	0-500	60	762	99	78	160	115	150	55	250/250	4500	80




Product Nr. 2330 Mechanical Steel Vice

- Mechanical Steel Vice is hardened and it has excellent way of using because of being sensitively grinded. It's usage characteristic fixes the material to be machined and at the same time it pulls the material to the base of the vice because of having springed system of modular jaws taking place in the moving jaws. Entire moving surface is sensitively grinded. With it's wedged fixing characteristic, moving jaw distance can be adjusted rapidly and can be used with convenience.
- Area of Using: CNC and mechanical milling machines, grinding and drilling machines, various industrial machines
- Entire moving surface is sensitively grinded and hardened.



Medium Part to Connect Two Work Piece

Referans Nr.	b1	 (kg)
2330-127	50	3.1
2330-157	50	3.8
2330-197	50	4.7

