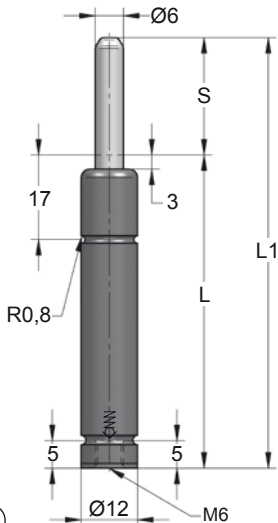


AFB V2

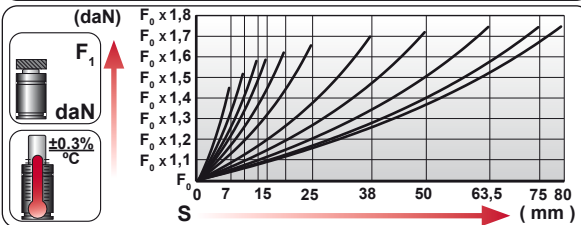
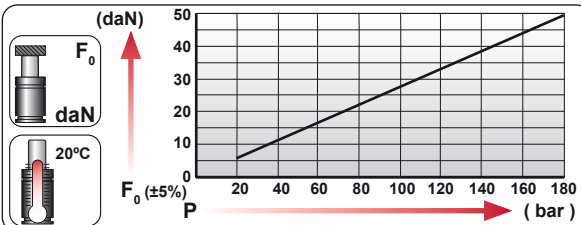
Mini



Not to be fixed by screws

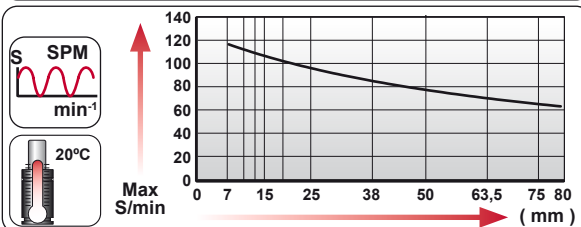
CODE	S (mm)	L1 ±0,25 (mm)	L (mm)	Kg.
AFB ... 007 V2	7	56	49	0.03
AFB ... 010 V2	10	62	52	0.03
AFB ... 012 V2	12.7	67.4	54.7	0.04
AFB ... 015 V2	15	72	57	0.04
AFB ... 019 V2	19	80	61	0.04
AFB ... 025 V2	25	92	67	0.04
AFB ... 038 V2	38	118	80	0.05
AFB ... 050 V2	50	142	92	0.06
AFB ... 063 V2	63.5	172	108.5	0.07
AFB ... 075 V2	75	195	120	0.07
AFB ... 080 V2	80	205	125	0.08

CODE	COLOR	Pressure		Force	
		bar	psi	daN	daN
AFB 13 050 V2	Green	45	650	13	20
AFB 25 050 V2	Blue	90	1305	25	45
AFB 38 050 V2	Red	135	1960	38	65
AFB 50 050 V2	Yellow	180	2610	50	85
AFB XX 050 V2	Black	20-180	290-2610	6 - 50	10 - 85



Language	Order	Force (F0)	Stroke (S)
ENG	ORDER	50 daN	50 mm
DEU	BESTELLUNG	50 daN	50 mm
FRA	COMMANDE	50 daN	50 mm
ITA	ORDINE	50 daN	50 mm
ESP	PEDIDO	50 daN	50 mm
POR	PEDIDO	50 daN	50 mm

AFB 50 050 V2



N₂

Smax < 90%

Vmax 1,6 m/s

Pmin (20°C)
Pmax (20°C)

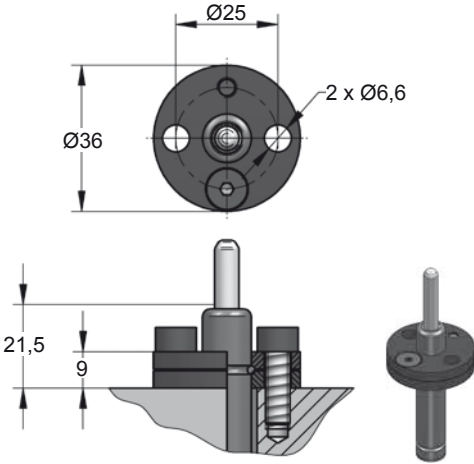
Tmin
Tmax

bar	psi	bar	psi	°C	°F	°C	°F
20	290	180	2610	0	32	80	176

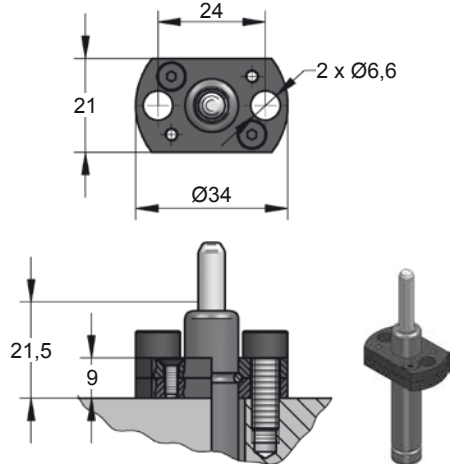


Mini

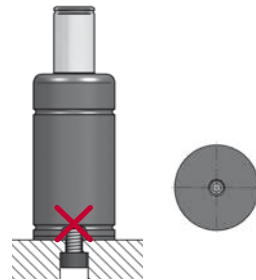
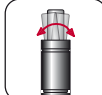
A14-012



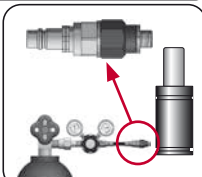
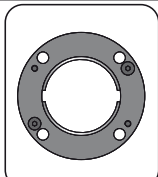
A59-012



Single base thread



Gas springs with only a single base thread should not be mounted by screws.



CODE	AFB 50 050 V2	X	A14-012	06 CG 2-Q
ENG ORDER	GAS SPRING	REPAIR KIT	FLANGE	CHARGING ADAPTER
DEU BESTELLUNG	GASDRUCKFEDER	ERSATZTEILSATZ	FLANSCH	LADEADAPTER
FRA COMMANDE	RESSORT À GAZ	KIT DE RÉPARATION	BRIDE	RACCORD DE CHARGE
ITA ORDINE	CILINDRO AD AZOTO	KIT DI MANUTENZIONE	FLANGE	ADATTATORE DI CARICO
ESP PEDIDO	RESORTE DE GAS	KIT DE REPARACION	BRIDA	ADAPTADOR DE CARGA
POR PEDIDO	CILINDRO DE GÁS	KIT DE MANUTENÇÃO	FLANGE	ADAPTADOR DE CARGA