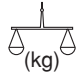
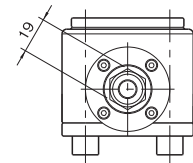
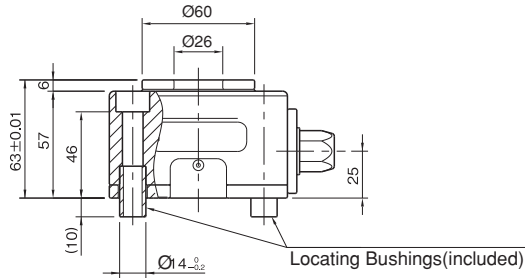
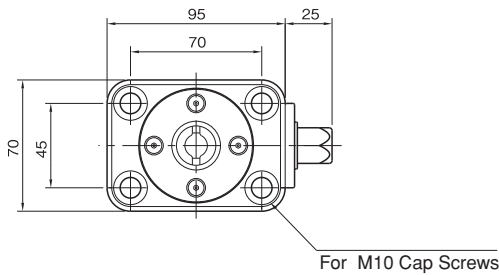


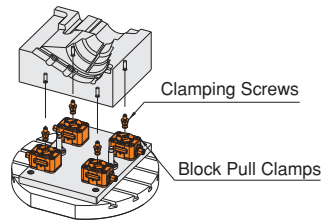
Referans Nr.	Clamping Force Kgf	N-m	 (kg)
1477-00012	1200	40	2.3



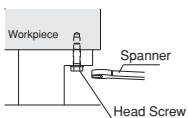
Product Nr. 1477 Power-tool Actuated Block Pull Clamps



1. Ideal for 5-Axis Machining
Block Pull Clamps mount under a workpiece making its surfaces to be machined fully open for the cutting tool. This allows completing multiple machining processes at a time.



2. Better Workability
Block Pull Clamps allow fastening a workpiece easily, unlike the conventional method of fastening with hexagon head screws from below.

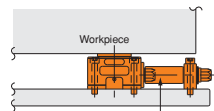


Conventional Method



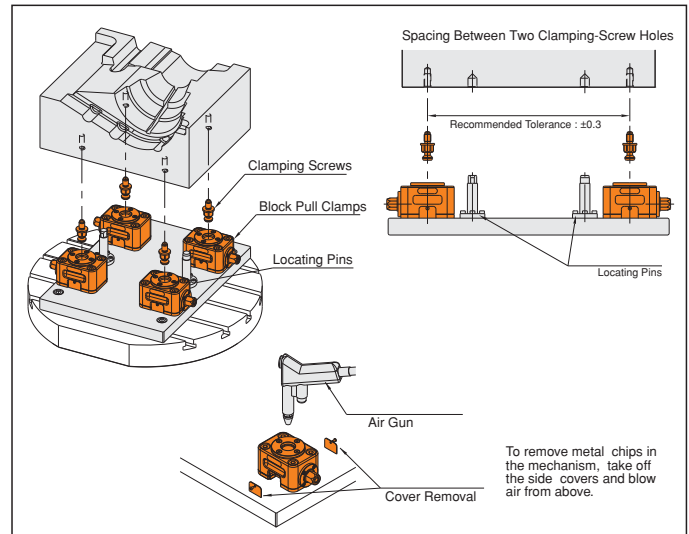
Application with pull stud

3. Actuated Remote-Control Units
If used in conjunction with Power-Tool Actuated Remote-Control Units, Block Pull Clamps can be installed at the best possible position under the workpiece.



Power-Tool Actuated Remote-Control Unit

How To Use



To remove metal chips in the mechanism, take off the side covers and blow air from above.