

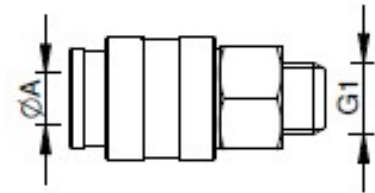
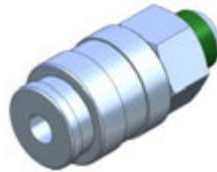
CA.12

PNEUMATIC

. Quick coupling socket

. Schnellschlusskupplung

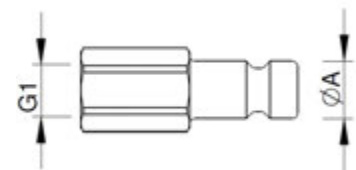
Article no.	A	G1	Weight
CA.12.06.003	2.5	M5	8 g
CA.12.06.001	5.0	G 1/8	27 g
CA.12.06.007	7	G 1/4	70 g



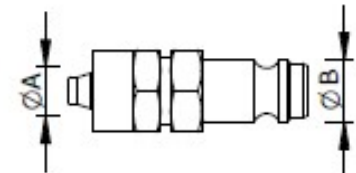
. Plug-In Nipple

. Stecknippel für Schnellschlusskupplung

Article no.	A	G1	Weight
CA.12.06.008	2.5	M5	3 g
CA.12.06.005	5.0	G 1/8	14 g
CA.12.06.006	7	G 1/4	23 g



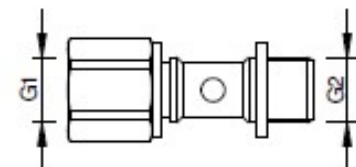
Article no.	A	B	Weight
CA.12.06.004	4	2.5	5 g
CA.12.06.002	6	5.0	18 g



. Pneumatic Hollow bolt

. Pneumatik Hohlschraube

Article no.	G1	G2	Weight
CA.01.08.005	M5	M5	3 g
CA.01.08.003	G 1/8	G 1/8	17 g
CA.01.08.006	G 1/4	G 1/4	28 g



. Pneumatic ring connection

. Pneumatik Ringanschluss Einfach

Article no.	G1	M	Weight
CA.01.08.008	M5	CA.01.08.005	6 g
CA.01.08.004	G 1/8	CA.01.08.003	15 g
CA.01.08.007	G 1/4	CA.01.08.006	20 g

