

CA.05 GGDG

Ø 10-14-20

. Spring loaded vacuum cup arm (Threaded tube)

. Greifarm gefedert drehbar (Gewinderohr)

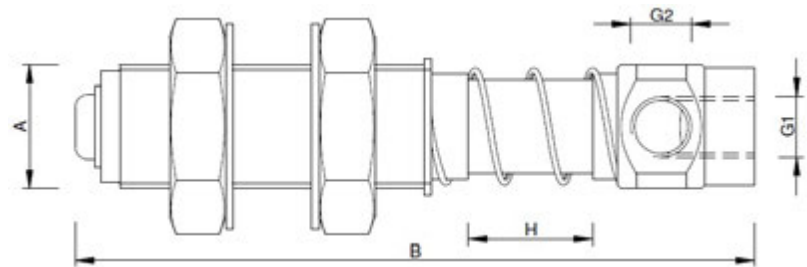
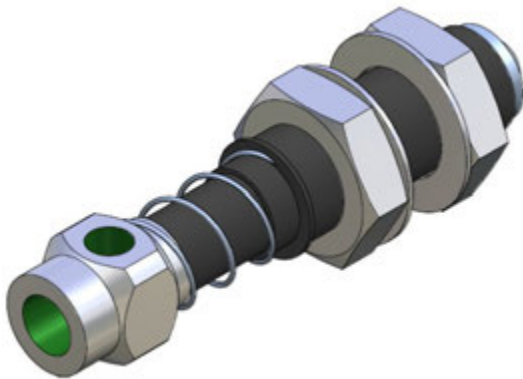


Table / Tabelle

H = Spring deflection
Federweg

F = Spring force
Federkraft

Remarks / Anmerkungen:

Extremely light weight (Material Aluminium)
Extrem leicht (Material Aluminium)

Guide (Tube and shaft) hard coated
Führung (Rohr und Welle) spezialgleitbeschichtet und gehärtet

Article no.	A	B	G1	G2	H	F(N)	Weight
CA.GGDG.10050510	M10x1	59	M5	M5	10	8	17 g
CA.GGDG.10050530		85			30	11	20 g
CA.GGDG.14181815	M14x1.5	84	G 1/8	G 1/8	15	9	43 g
CA.GGDG.14181840		109			40	14.6	48 g
CA.GGDG.20141820	M20x1.5	109	G 1/4	G 1/4	20	11.7	110 g
CA.GGDG.20141850		147			50	16.8	126 g

Application example / Anwendungsbeispiel

