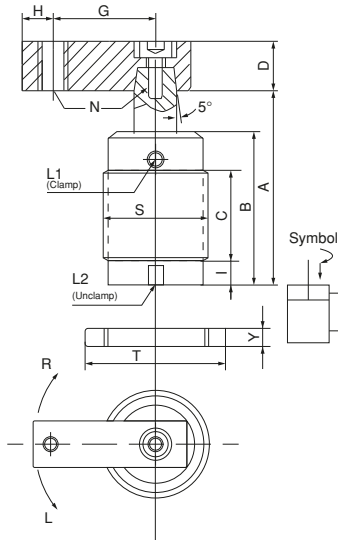


Referans Nr.	Mounting Type	Clamping Arm	Max. Pressure	Normal Pres.	Acting Type	Swivel Angle	Swivel Stroke (mm)	Clamp. Str. (mm)	Bore Diameter Ø (mm)	Piston Rod Ø	Clamp Force (25kg/cm ²)	A (mm) Unclamp	B (mm)	C (mm)	D (mm)	G (mm)	H (mm)	I (mm)	L1 Clamp L2 Unclamp	N (mm)	S (mm)	T (mm) 2 pcs/set	Y (mm)	Weight (kg)
1047-NHTS025	Threaded Body	Tel Kol	70 kg/cm ²	20-45 kg/cm ²	Double Acting	90° (0°-45°, 60°, 180°) ± 2°	12	14	25	18	59	100	70	35	□ 25.4	50	10	9	1/8 PF	M10 x1.5	M45 x1.5	Ø 65	10	0.8
1047-NHTS032						14	15	32	20	125	111	76	45	□ 25.4	55	10	9	1/8 PF	M10 x1.5	M50 x1.5	Ø 70	11	1.1	
1047-NHTS040						14	15	40	20	200	113.6	80	45	□ 25.4	55	10	9	1/8 PF	M10 x1.5	M55 x1.5	Ø 75	11	1.25	
1047-NHTS050						14	14	50	20	400	120	87	50	□ 25.4	55	10	9	1/8 PF	M10 x1.5	M65 x1.5	Ø 85	12	1.7	



Product Nr. 1047 Hydraulic Swing Clamp

NHTS – Threaded Version, Single Arm With Pipe

- Before buying please, movement indicate the type and rotation angle.

