

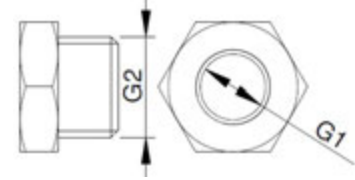
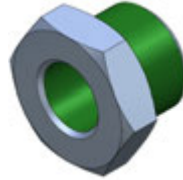
CA.08.14

PNEUMATIC

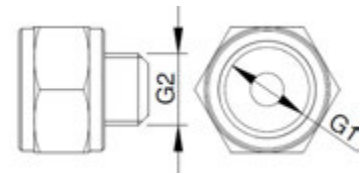
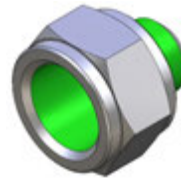
. Reducer (parallel)

. Reduzierstück zylindrisch

Article no.	G1	G2	Weight
CA.08.14.001	M5	G 1/8	8 g
CA.08.14.002	M6		
CA.08.14.003	G 1/8	G 1/4	11 g
CA.08.14.004	M6		13 g
CA.08.14.022	G 1/4	G 3/8	12 g



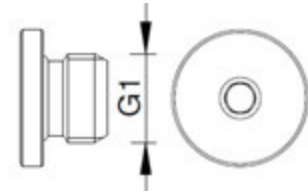
Article no.	G1	G2	Weight
CA.08.14.018	G 1/8	M5	7 g
CA.08.14.019	G 1/4	G 1/8	14 g



. Male plug (parallel)

. Gewindestopfen zylindrisch

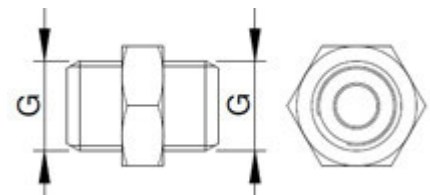
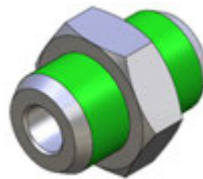
Article no.	G1	Weight
CA.08.14.013	M5	3 g
CA.08.14.014	G 1/8	4 g
CA.08.14.015	G 1/4	7 g



. Nipple (parallel)

. Doppelnippel zylindrisch

Article no.	G	Weight
CA.08.14.021	M5	2 g
CA.08.14.005	G 1/8	9 g
CA.08.14.006	G 1/4	15 g



. Nipple (parallel)

. Doppelnippel reduziert zylindrisch

Article no.	G1	G2	Weight
CA.08.14.011	M5	G 1/8	8 g
CA.08.14.012	G 1/8	G 1/4	15 g

